

# WCCUSD Bond Program Project Status Report



Citizen Bond Oversight Committee  
Measure M, D, J, D-2010 & E-2012

June 22, 2016





# ELEMENTARY SCHOOLS



# Nystrom Elementary School

Contract Value: \$21,188,102 Change Order: 4.77%





**Lobby Area**



**Teacher's Lounge**



**Playground Area Lime Treatment**



**Playground Area**



# MIDDLE SCHOOLS





# Fred T. Korematsu Middle School

Contract Value: \$42,762,406 Change Order: 3.45%





**Roof Screen**

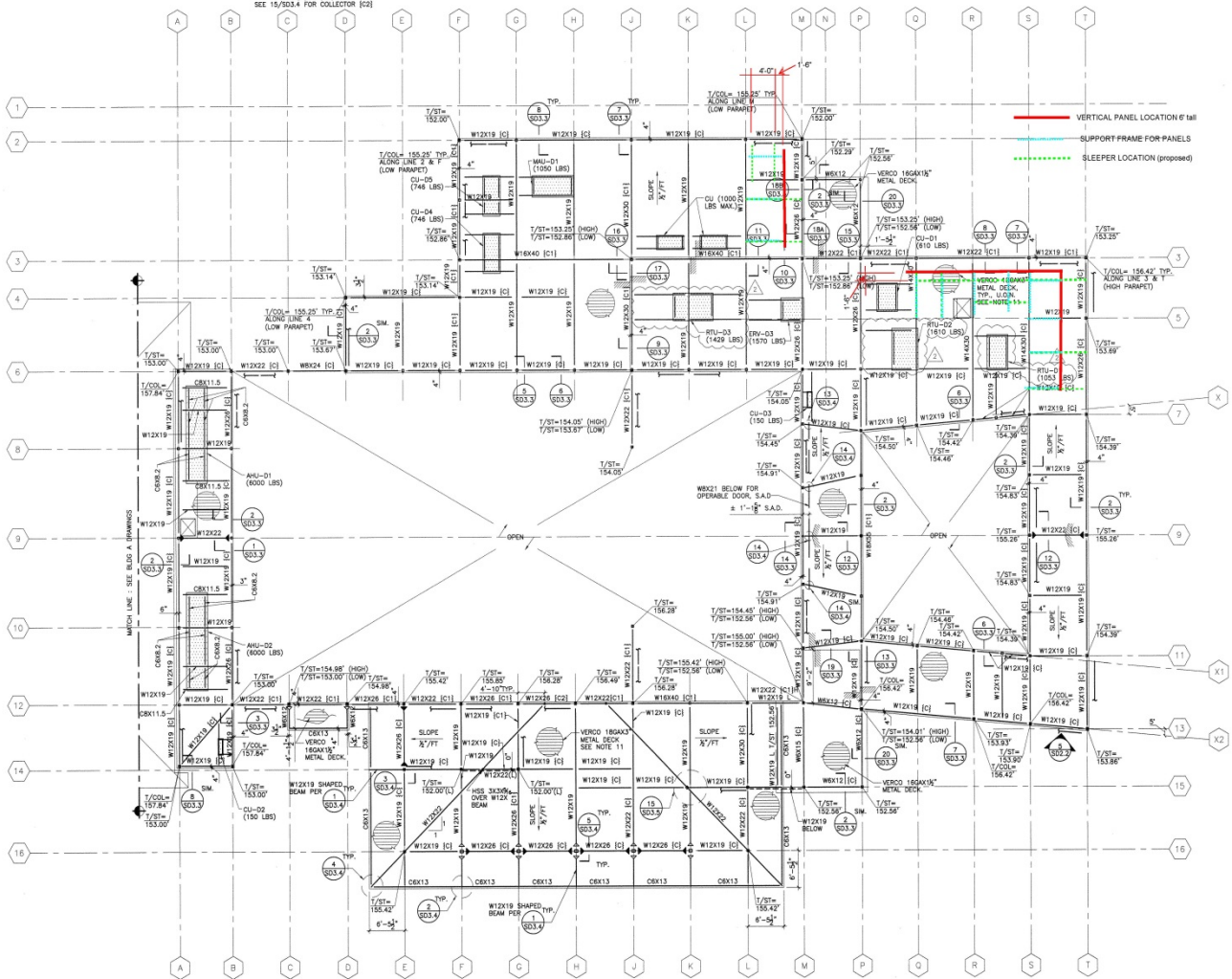


**PLAN NOTES :**

1. SEE ARCH. DWGS FOR SLOPE AND ELEVATION WHICH IS NOT SHOWN.
2. TOP OF STEEL ELEVATION IS AS NOTED ON PLAN.
3. DENOTE SEISMIC MOMENT RESISTING CONNECTION (SEE DETAIL 4/52.3, U.O.N.)
4. DENOTE NON-SEISMIC MOMENT RESISTING CONNECTION (SEE DETAIL 4/52.3, U.O.N.)
5. ALL STEEL BEAM DESIGNATION SHALL BE READ AS GIVEN BELOW.
6. BEAM SECTION: UPWARD CAMBER AT MID SPAN OF BEAM.
7. DENOTE COLLECTOR A325-5C BOLTS SHALL BE USED. SEE DET. 5 & 10 AT SHEET 52.2 FOR COLLECTORS [C] & [C1].
8. SEE DETAIL 1/26.1 & 2/32.1 FOR TYPICAL BEAM TO COLUMN CONNECTION, U.O.N.
9. ADDITION REINFORCEMENT SHALL BE PROVIDED TO ALL MECH. UNIT. SEE 1/22.2 FOR REINFORCEMENT DETAIL, U.O.N. ON PLAN. SEE MECH. DWGS FOR ANCHORAGE DETAIL AT ALL MECH. UNIT.
10. PROVIDE 2x4 WELD PATTERN WELD AT SUPPORT W/TOP SEAM @ 12" o.c. SEE TYPICAL DETAIL 1/32.3.
11. DO NOT LOCATION OF SUPPORT BEAMS FOR MECH. UNITS SHALL BE COORDINATED WITH MECH. ENGINEER AND SHOWN IN THE SHOP DRAWING FOR SEOR/ARCH REVIEW.
12. FOR OPENING AT METAL DECK, SEE DETAIL 4, 5 & 6 OF SHEET 52.1 FOR REINFORCEMENT, U.O.N.
13. SEE GENERAL NOTES ON SHEET 52.1.
14. SEE SHEET 52.1, 52.2 & 52.3 FOR TYPICAL STEEL DETAIL.
15. SEE 1/32.3 FOR METAL DECK WELDING SCHEDULE AND PROPERTIES.
16. SEE DETAIL 1/22.1 & 2/32.1 FOR TYPICAL BEAM TO COLUMN CONNECTION, U.O.N.
17. ADDITION REINFORCEMENT SHALL BE PROVIDED TO ALL MECH. UNIT. SEE 1/22.2 FOR REINFORCEMENT DETAIL, U.O.N. ON PLAN. SEE MECH. DWGS FOR ANCHORAGE DETAIL AT ALL MECH. UNIT.
18. PROVIDE 2x4 WELD PATTERN WELD AT SUPPORT W/TOP SEAM @ 12" o.c. SEE TYPICAL DETAIL 1/32.3.
19. DO NOT LOCATION OF SUPPORT BEAMS FOR MECH. UNITS SHALL BE COORDINATED WITH MECH. ENGINEER AND SHOWN IN THE SHOP DRAWING FOR SEOR/ARCH REVIEW.

**ROOF DESIGN LOAD :**

DEAD LOAD (LOW ROOF)	3.5 PSF
TYPICAL (3" X 16GA METAL DECK)	2.0 PSF
INSULATION	4.5 PSF
CEILING, MECHANICAL, ETC.	8.0 PSF
BLVD-UP ROOFING	
<b>LINE LOAD (REDUCIBLE)</b>	<b>20 PSF</b>
ROOF	



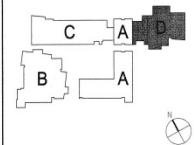
**1 BUILDING D LOWER ROOF FRAMING PLAN**

Screening



Revisions:	No.	Description:	Date:	Appr.:
	1	GREEN ROOF REVISION	2/11/21	
	2	REVISION 2	2/11/21	

**KEY PLAN**



**DSA APPROVAL**

GENERATION SHEET	NO. OF THE STATE ARCHITECT	DATE:
	APPL 01-111655	JAN 8 2021
	NO. OF THE STATE ARCHITECT	DATE:
	APPL 01-111655	JAN 8 2021

**Kam Yan & Associates**  
Structural Engineers  
145 REDWOOD BLVD., SUITE 100  
REDWOOD CITY, CA 94061  
PHONE: 650-432-9607  
FAX: 650-432-3861  
WWW.KAMYAN.COM

This document is the property of the Owner and is not to be used without the written permission.

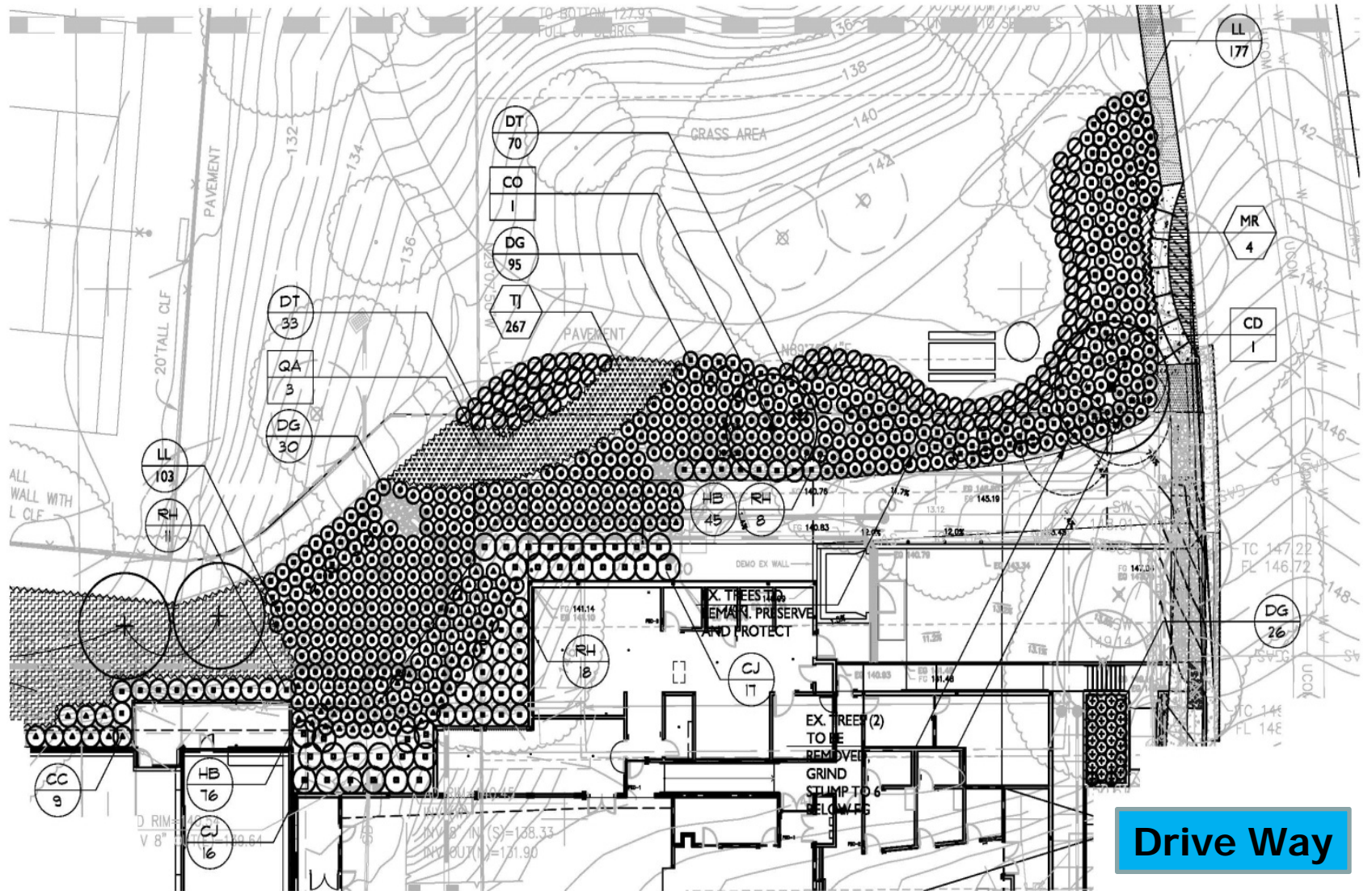
Engineer of Record: Architect of Record:

**HY HIBBER YAMAUCHI ARCHITECTS, INC.**  
300 37th Street, 2nd Fl.  
Oakland, CA 94612  
510.446.2222 | 510.446.2211 | fax

Project: PORTOLA MIDDLE SCHOOL  
AT CASTRO  
7125 Donal Avenue  
El Cerrito, CA 94530

**BUILDING D LOWER ROOF FRAMING PLAN**

Scale: 1/8" = 1'-0"	Client Ref. No.:
Drawn By: SG	Drawn No.:
Checked By: KY	Sheet:
Issue Date: 1/7/2013	Sheet # of _____ Sheets



**Drive Way**



PROJECT # P4073	CCD-034	L3.2R
DATE: 6/10/16	SCALE: 1"=20'-0"	
KOREMATSU MIDDLE SCHOOL		



# High Schools



# El Cerrito High School Stadium

Contract Value: \$13,438,000 Change Order: 6.98%



**Basketball Court**



**West Side Mulch**



# Richmond High School Fire Alarm Upgrade

Contract Value: \$1,750,000    Change Order: 0%







F  
A  
I  
L  
L  
EARNING

SONOMA STATE

Wing 300



**Control Panels at Admin Office  
Closet Electrical 101C**